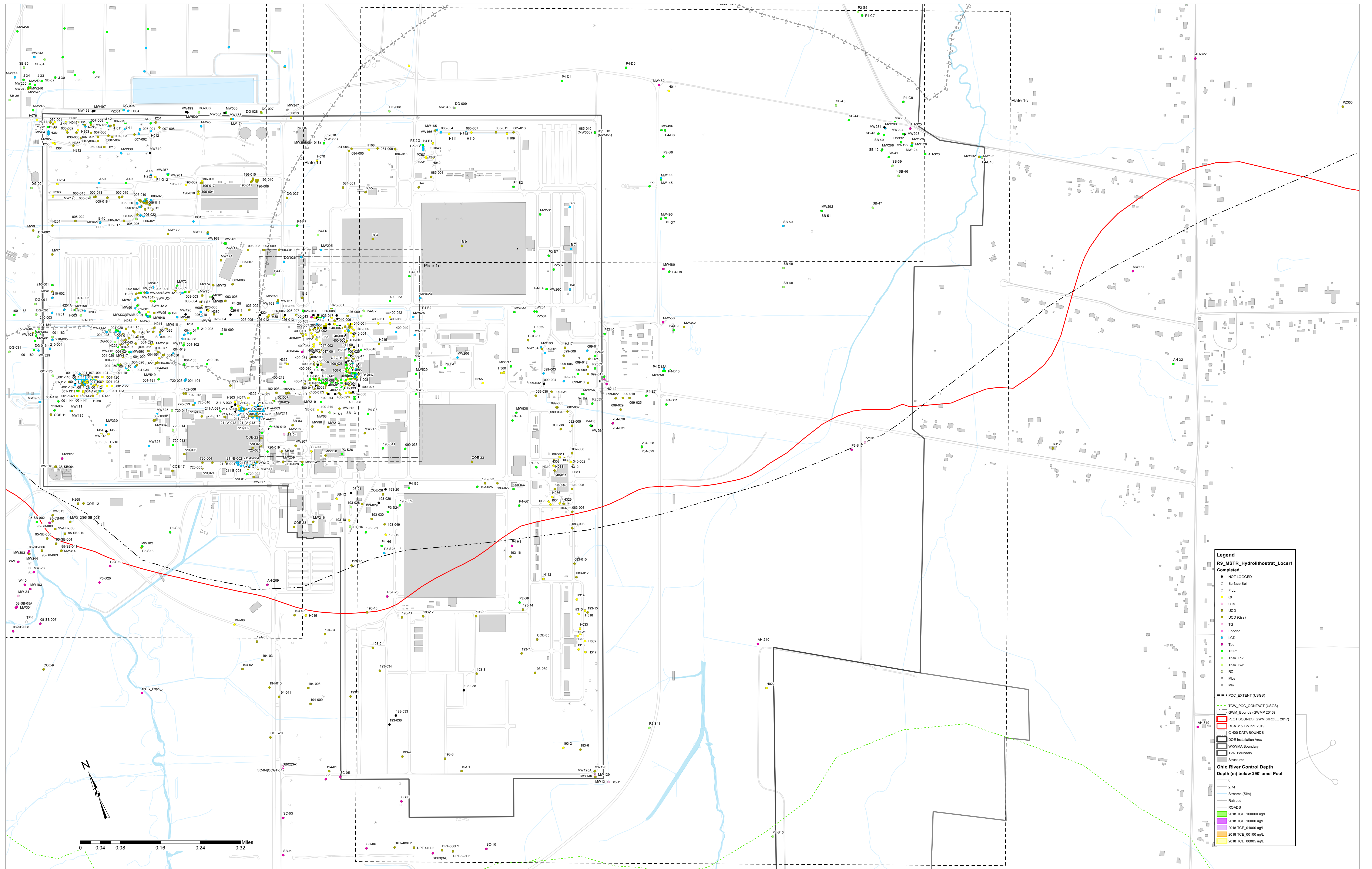


Plate 1b. R9 Hydrolithostratigraphy_Dbase_Eastern_Industrial_Site_Locations.
(Draft lithologic/stratigraphic boring completion shown by location.)



Utilize Left PDF Frame to turn Layers On/Off. (Data Pts, Labels, Contours, Surface, Legend, Plumes, Maps, Map Features)

Clustered data points may not be labeled because of figure scale.
See posted R9_MSTR_Hydrolithostrat_Dbase_Locs.csv or .shp for detailed location information.